



You  
are  
unique

**Manifesto** system solutions



Steelcase



## You are the future. You are Manifesto

Mobile, connected, and networked. Dynamic, optimistic, and daring.  
Confident and open-minded. Driving economic growth. Defining a new work-life balance.  
Respectful of tradition but not enslaved by it. Looking forward rather than back.  
Work? No hassle. No clutter. Just a space that lets you do your thing.  
And be who you are.

### Manifesto 3-dimensional space management



Facilitate privacy and encourage interaction with personal portable screens.

Iconic elements provide personalized storage and privacy.

Use dead space to maximize your storage needs.

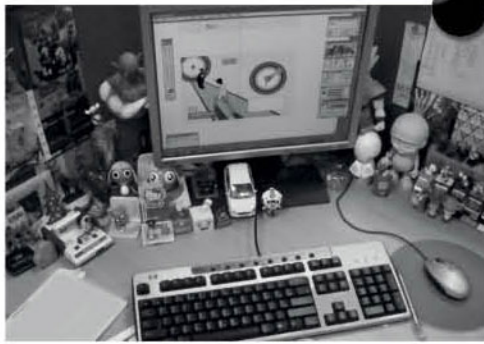
One smart system with cable storage and connectivity built-in.

Transform vertical storage into structural elements.

## Problem

New work styles, new work-life demands and increasing workplace density are changing the way systems and storage are used and planned.

### Insight 1



#### Objects trump paper

We want the things that matter to us, with us. Personal and work, we mix it all up. Family photos next to dossiers. Laptop next to favorite mug. We feel comfortable when the 2 P's of Personal and work-related Public items, and the 3 T's of Tools, Toys and Trophies, are all in the same space. Our space.



### Insight 2



#### People want visual access

People don't want to put their stuff in the store room or have to walk to the archive; it's so much easier to find something when you can see it. There's nothing to hide. Hang it up, spread it out, put it on top. For today's workers, in sight is in mind.



### Insight 3



#### More important and urgent work stays close by and near the top

When objects, papers, and devices are used daily, we prefer to store them in open cabinets and on trays. Or dump them on the desk. Or on the floor. Whatever and wherever as long as they're on top, ready to grab. Result: pile, pile, pile.



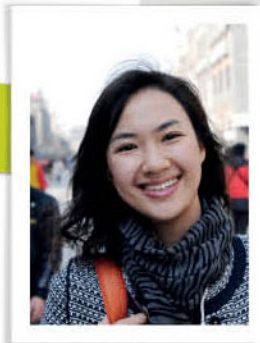
### Work on your own

Simple configuration that is ideal for situations in which collaboration requirements are low and privacy requirements high. The filing cabinets double as work surface supports, so the whole setup requires fewer legs. Which means extra legroom. The screens ensure you can focus on the job at hand.



Private in public

Your work-life balance



### Ultimate compact

The ultimate compact design for use in the smallest spaces, this workspace's multifunctional bridge provides more work surface within the same overall footprint, more storage, and more privacy. It's also a great high-visibility place to put urgent items, and provides an ideal locale to discuss something with a colleague.



Personal storage

### It's good to talk

Four L-shaped workspaces in a four-cluster layout for interactive teamwork. The central cabinets provide fast access to shared files and tools, and double as a natural spot for people to gather and swap information. The side units extend each user's work surface into an enveloping L shape that provides valuable extra work and storage space.



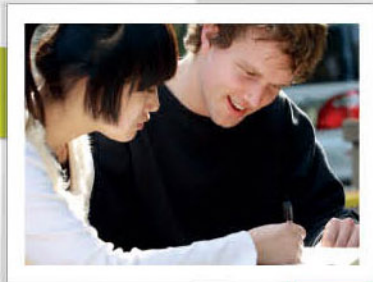
### Fast-response teams

A bench layout with a difference. Each worker has a personal mobile cabinet with built-in cushioned surface that doubles as ad-hoc seating for short meetings with co-workers and visitors. The desk surface can be placed at right angles to the

cabinets and changed around any time. Result: a bench-type design that facilitates informal collaboration and working in pairs – dyadic work – and also provides enough storage for work and personal items.

Dyadic work  
More office per  
**m<sup>2</sup>**

Work how  
you want



### High-performance team space

Sit or stand, the choice is yours with this spacious setup that provides both sitting height and standing height work surfaces, and facilitates privacy and openness. Perfect for individual work (sitting) and collaborative work (standing or sitting and chatting on the cushion cabinet).



Stay informed

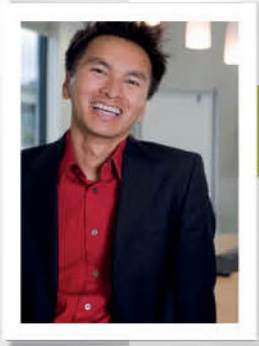
### Discuss, decide, do

Get together and get it done. Brief the team or drill-down the results. Show, tell, and share face-to-face or remotely. This flexible team-meeting space with its loads of connectivity options helps you outperform in today's fast-changing world.



### For the person in charge

Questions, requests, new opportunities, new challenges – the boss needs to be on top of his or her game all the time. Open and approachable, yet with enough privacy to be able to do the 101 other things you have to do. Manifesto's esthetic enclosed solutions make combining public and private a snap.



A space fit for leaders

\*Launch Date TBC for Extended Worksurface and L-Return

Somewhere for people to meet



### Encourage happy coincidences

How often do great ideas emerge out of a chance conversation, an idle thought? Don't leave these magic moments to chance – nurture them. Manifesto's modular designs make it easy to create shared spaces that form natural meeting places. Ideal breeding grounds for happy coincidences.



We take a life-cycle approach to the design, use and disposal of our products. From materials, production, transportation and use, right through to end of life, each element in the Manifesto range is designed to reduce its impact on the environment.

[www.steelcase.asia](http://www.steelcase.asia)

Hong Kong +852 2520 0160 Guangzhou +86 20 8732 3332 Tokyo +81 3 3448 9611 Sydney +61 2 9660 5511 Melbourne +61 3 9670 1555  
 Shanghai +86 21 6137 6288 Beijing +86 10 5911 3988 Singapore +65 6738 5225 Bangalore +91 80 3055 0300 Delhi +91 124 3077 200  
 AP130E 08 ©2011 Steelcase Inc. All rights reserved.

Love how you work.®